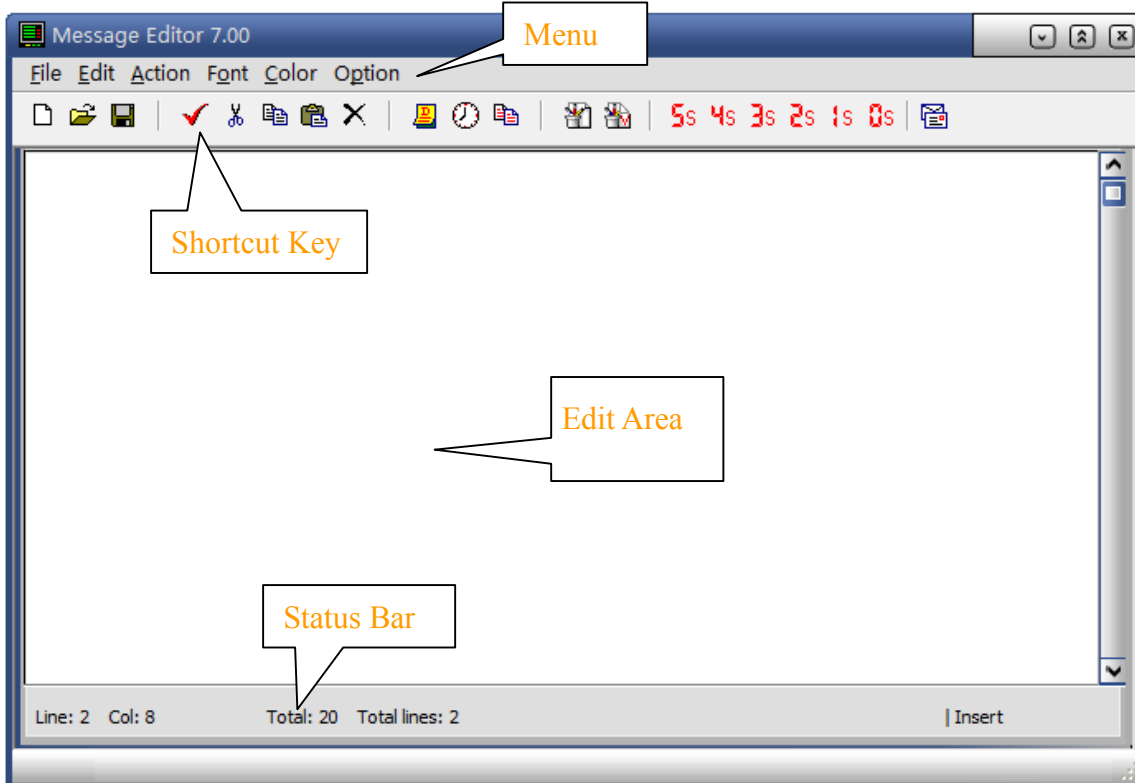


Software -Operation

Window for Message Editing *Message Editor 7.00*

- Click on MsgEditor7.0→MsgEditor 7.0 to open the Message Editor. The following window will appear:



Menu Description:

Item	Name	Description
File	New	Create new message
	Open	Open file
	Save	Save message
	Save As	Save message to another file
	Exit	Exit the software
Edit	Select All	Select Mark all
	Copy	Copy
	Cut	Cut
	Paste	Paste
	Del	Delete
	Copy text to Clipboard	Copy text to clipboard
	Cut text to Clipboard	Cut text to clipboard
	Paste Text from Clipboard	Paste text from clipboard
Action	See Appendix I	
Font	See Appendix II	
Color	See Appendix II	
	Date...	Insert current date

	Time	Insert current time
	New Page	Open new page
	Europe Character	Insert European symbol
	Pause	See Appendix II
	Graphics...	Insert image(*.jpg,*.bmp)

Shortcut Key Description:

New	Create new message
Open	Open file
Save	Save message
Select	Select mark all
Cut	Cut
Copy	Copy
Paste	Paste
Del	Delete
Date...	Insert current date
Time	Insert current time
New page	Open new page
Picture Load	Insert image(*.jpg,*.bmp)
Picture View	Preview of the inserted image
Pause 0-5 s	A corresponding pause(0-5 s) will be inserted after the message appears
Transmit	Transfer message to LED display

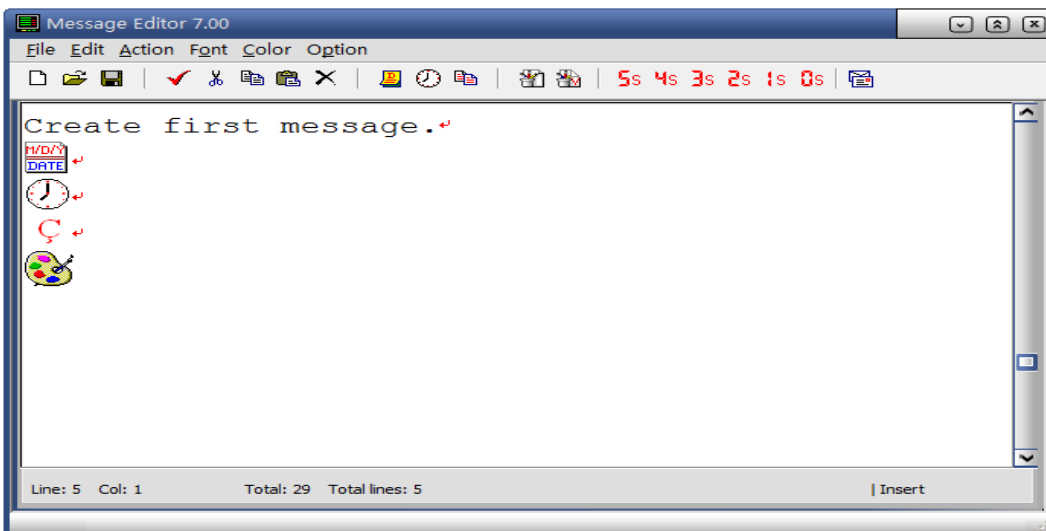
Software - Text, Date, Time, Special Symbols, Image and Saving

Create and Save a Simple Message with Text, Date, Time, Special European Symbols and Image

- Open the message editing window

Text

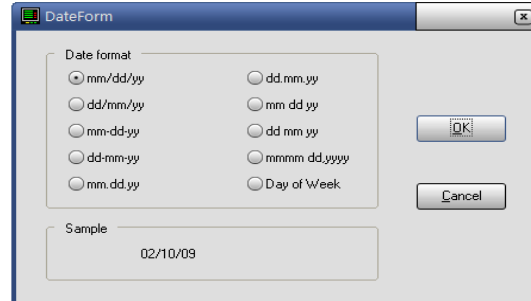
- Create the following message:



- Enter the text as the illustration.
- Inserting a line break with the computer keyboard causes each line to be displayed individually on the LED display.

Date

- Enter the date in the same manner, using the shortcut key(Date) or Click on **Option → Date**. A window will open in which you can select the date format. Click **OK** to apply the settings or **Cancel** to stop. You will find an example on the Sample.

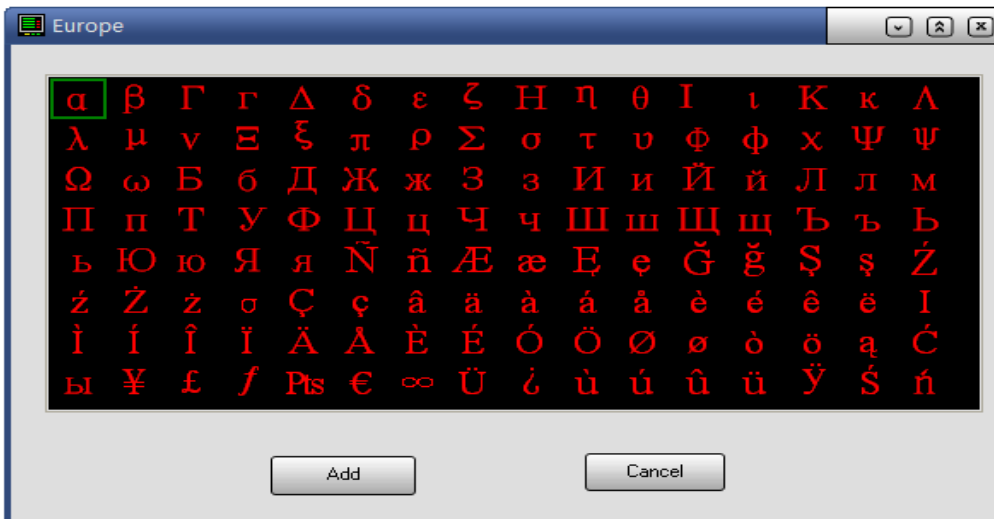


Time

- To enter the time, using the shortcut key(Time) or click on **Option → Time**.

Special European Symbols

- Click on **Option → Europe Character**. A window with the available symbols will open.



- Select a symbol by clicking on it. To insert it, click **Add**. Click **Cancel** to close the window.

Insert an Image

- Images can be inserted as *.bmp or *.jpg formats.
- Click the shortcut key(Load Picture) or click **Option→Graphics** to insert the image. Select the image and click **Open**.
- The window “Picture Loading...” will open. Click **OK** to insert the image.**Open** to load a new image or **Cancel** to stop.



- You can see the image which you are insert to the edit area by click the shortcut key(Picture View).

Note: The default size of the LED display is 16 x 128 pixels. The photo size need correspond with the LED display.

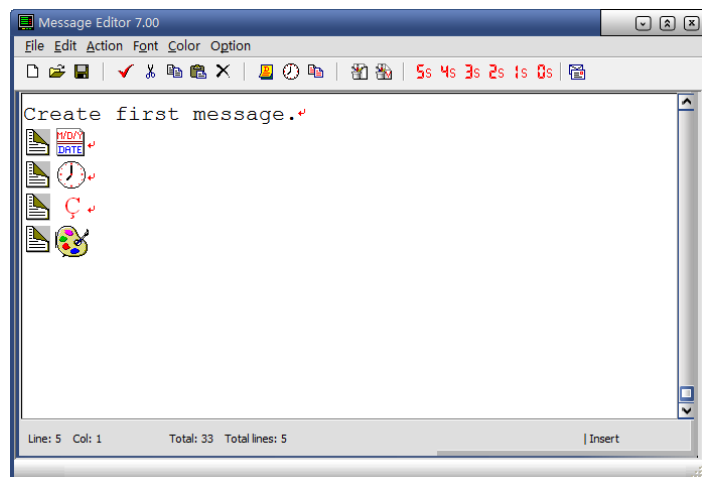
Saving, Opening and Creating New Messages

- To be able to return to a message at a later time, click File→Save and save the message with a file name. If you would like to save the same message under a different name, click File→Save As... and save the message again. To return to the message later, click File→Open and then open your saved message. To open or save, you can also use the shortcut key (Open) and shortcut key (Save).
- To create a new message, click **File→New** or shortcut key (New).

Software – Insert Pages

Insert a New Page

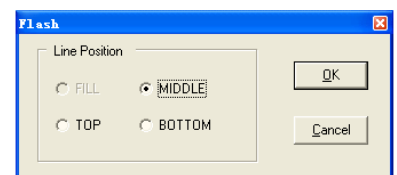
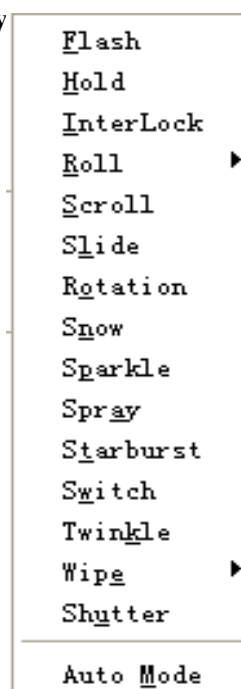
- You can save a maximum of 255 pages (messages) per message. and each page at most include 116 characters.
- To insert a new page, click the shortcut key (New Page) after entering a paragraph or click **Option→New Page**.



Software – Single Column / Double Column Displays

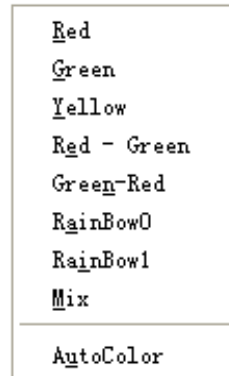
Display Methods – Single Column / Double Column Display

- The type of action must be inserted prior to the text to be displayed.
- Click Action. Click the desired action. A dialogue window will open. You can determine where (Top, Middle or Bottom) placed the message
- If you would only like to create, for example, a one column message with two words without a paragraph break, a different action can be chosen for each word and one can be placed on top and the other on the bottom. When the message is transferred, one word will be on top and the other word will be on the bottom. Note that font sizes larger than 16 cannot be used for two column messages.
- These settings can also be used for one column displays. Select top, bottom or middle accordingly.



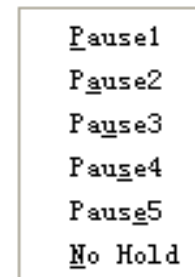
Font and Color

- Click **Font** and select the desired font.
- Always insert the font before the text to be displayed.
- Click **Color** and select the desired color.
- Enter the Welcome and press the enter key on your keyboard to move to the next column.
- Choose a different font size.
- Choose a different color, if you would like.
- Now enter the text Home.

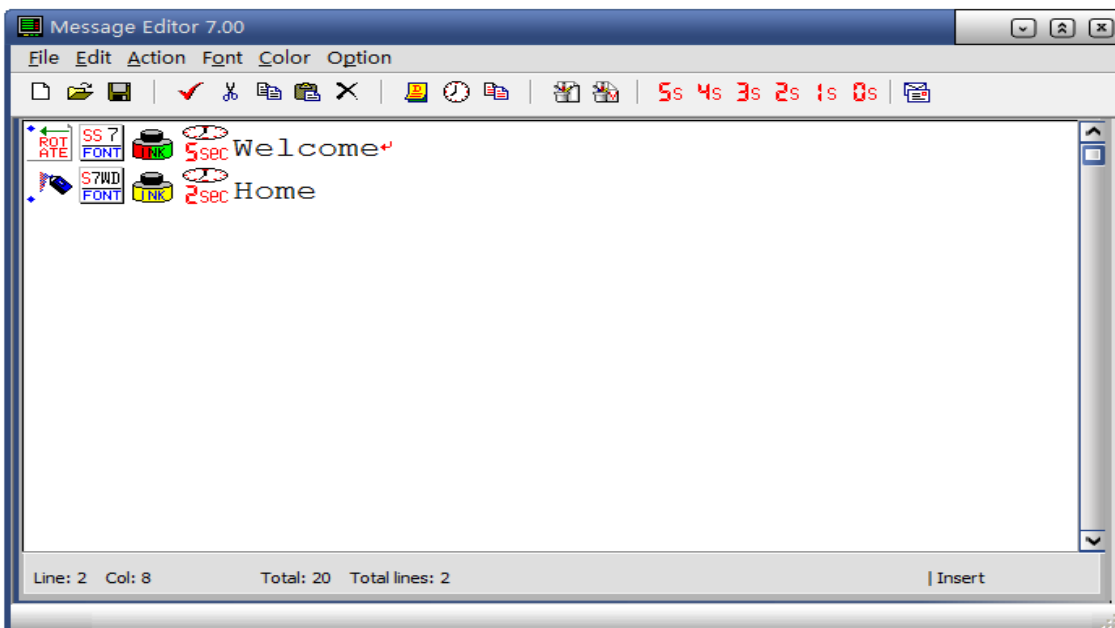


Insert a Pause

- A pause means that the text will be displayed longer.
- Click **Option→Pause**
- Click the desired pause.
- Insert pauses before the text.



The Completed Message:



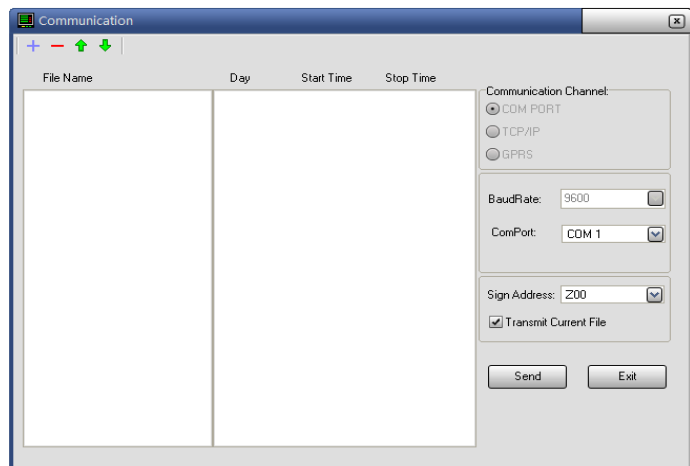
Software – Transfer Message to the LED Display

- After editing the message, click the shortcut key(Transmit) or click **File→Transmit...**
- The *Communication* window will open and you need choose one way to transfer.

Software – Transfer Message to the LED Display

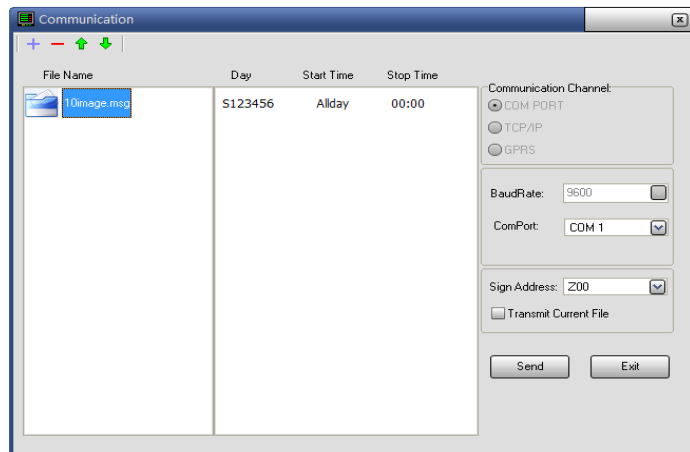
Transmit Single File

- Make sure **Transmit Current File** is checked.
- If you are using only one LED display, leave the **Sign Address** at **Z00**. The **Sign Address** can be changed if multiple LED displays will be operated via the same serial connection.
- Choose the right ComPort.
- Click **Send** to begin the transfer.
- Click **Exit** to close the window.



Transmit Multi File

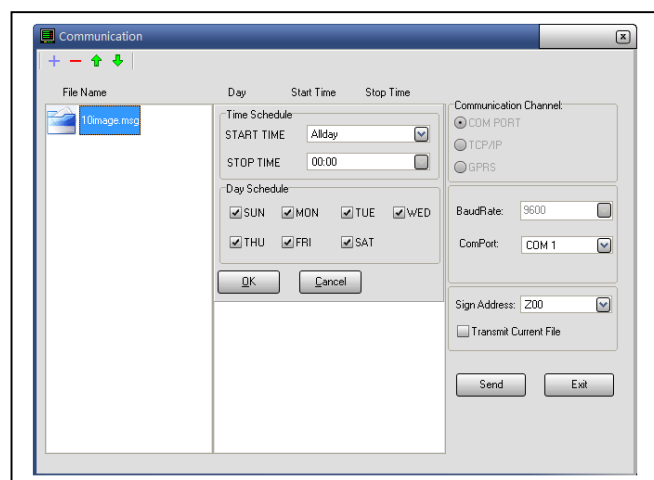
- Make sure **Transmit Current File** is unchecked
- If you are using only one LED display, leave the **Sign Address** at **Z00**. The **Sign Address** can be changed if multiple LED displays will be operated via the same serial connection.
- Click button **+** to add some file or using button **-** to delete some file. You can use button **↑** and button **↓** while you want to adjust the file sequence.
- Choose the right ComPort.
- Click **Send** to begin the transfer.
- Click **Exit** to close the window.



Software – PC Synchronization and Programming

Time Programming

- A fade up and fade down time can be specified for each message.
- Open the communication window. Double click the filename. the time schedule and day schedule will appear.
- Set the start and stop times and the days of the week on which the message should be displayed..
- Click **Send** to transfer the messages.
- The messages will now be displayed and faded out at the programmed times.



Appendix I:

LED Display	Description	LED Display	Description
Auto	Automatic by device	Wipe Out	Wipe from the middle outwards
Hold	Immediate display	Wipe Middle	Wipe from the middle
Rotate	Rotate	In lock	Interlocking
Scroll	Rollen	Slide	Slide from right to left
Roll Left	Scroll left	Spray	Spray
Roll Right	Roll right	Shutter	Shutter
Roll Up	Roll up	Snow	Snow
Roll Down	Roll down	Stburst	With flashing star animations
Roll Out	Scroll out wards	Switch	Weave vertically
Roll In	Scroll inwards	Sparkle	Sparkle
Wipe Left	Wipe Left	Flash	Flash
Wipe Right	Wipe Right	Twinkle	Twinkle
Wipe Up	Wipe upwards	For short forms, please see Remote Control- Change the Font, Colour, Pause and Display Method	
Wipe Down	Wipe downwards		
Wipe In	Wipe inwards		

Appendix II:

Function	Description	LED Display	Function	Description	LED Display
Font	Sans Serif 7	SS7	Color	Red	RED
	Sans Serif 7 Wide	SS7W		Green	GREEN
	Sans Serif 7 double	SS7D		Yellow	YELLOW
	Sans Serif 7 d-wide	SS7WD		Rainbow 0	RAINBOW 0
	Serif 7	SF7		Rainbow 1	RAINBOW 1
	Serif 7 double	SF7D		Green on Red	GR
	Serif 12	SS16		Red on Green	RG
	Serif 16	SF16		Mix	MIX
Pause	Pause 1	P05	AutoColor	AUTO	
	Pause 2	P04			
	Pause 3	P03			
	Pause 4	P02			
	Pause 5	P01			
	NO HOLD	P00			